



## CRITERION 4

### Infrastructure and Learning Resources

***4.3 .1 Institution frequently updates its IT facilities and provides sufficient bandwidth for Internet connection.***

**4.3.1 Institution frequently updates its IT facilities and provides sufficient bandwidth for internet connection.**

Sr.No	Contents	Link
1	List of computers, laptops, printers, scanner, LCD projector	Click
2	List of Software used in computer and by college faculty.	Click
3	List of total devices and Configurations	Click
4	Comparative chart showing updates of ICT facilities in the last five years.	<b>Click</b>

**LIST OF COMPUTERS,  
LAPTOPS,PRINTERS,  
SCANNER, LCD  
PROJECTOR**

Registration No. : F - 47 A'bad  
Estd. Year : June 1960  
Off. : 02442 - 222470, 231094  
Fax. : 02442 - 224739

Marathwada Shikshan Prasarak Mandal's,

## Balbhim Arts, Science & Commerce College, Beed

Dist. Beed (M.S.) 431 122

**Dr. V. G. Sanap**

**Principal**

M.A., M.Phil., Ph.D



NAAC Reaccredited (III cycle) A<sup>+</sup> Grade  
College with Potential for Excellence  
I.S.O. Certified

(Permanently affiliated to Dr. Babasaheb Ambedkar Marathwada University, Aurangabad)

web - [www.mspsmbeed.com](http://www.mspsmbeed.com)

e-mail - [mspsmbeed@gmail.com](mailto:mspsmbeed@gmail.com)

e-mail - [drvasantsanap11@gmail.com](mailto:drvasantsanap11@gmail.com)

### List of Computers in College

Sr.No.	Name of Computer
1	HCL-Intel core 2 due 2.93 2 GB/320 GB HDD 18.5" LCD monitor
2	HCL-Intel core 2 due 2.93 2 GB/320 GB HDD 18.5" LCD monitor
3	HCL-Intel core 2 due 2.93 2 GB/320 GB HDD 18.5" LCD monitor
4	HCL-Intel core 2 due 2.93 2 GB/320 GB HDD 18.5" LCD monitor
5	HCL-Intel core 2 due 2.93 2 GB/320 GB HDD 18.5" LCD monitor
6	HCL-Intel core 2 due 2.93 2 GB/320 GB HDD 18.5" LCD monitor
7	HCL-Intel core 2 due 2.93 2 GB/320 GB HDD 18.5" LCD monitor
8	HCL-Intel core 2 due 2.93 2 GB/320 GB HDD 18.5" LCD monitor
9	HCL-Intel core 2 due 2.93 2 GB/320 GB HDD 18.5" LCD monitor
10	HCL-Intel core 2 due 2.93 2 GB/320 GB HDD 18.5" LCD monitor
11	HCL-Intel core 2 due 2.93 2 GB/320 GB HDD 18.5" LCD monitor
12	HCL-Intel core 2 due 2.93 2 GB/320 GB HDD 18.5" LCD monitor
13	HCL-Intel core 2 due 2.93 2 GB/320 GB HDD 18.5" LCD monitor
14	HCL-Intel core 2 due 2.93 2 GB/320 GB HDD 18.5" LCD monitor
15	HCL-Intel core 2 due 2.93 2 GB/320 GB HDD 18.5" LCD monitor
16	HCL-Intel core 2 due 2.93 2 GB/320 GB HDD 18.5" LCD monitor
17	HCL-Intel core 2 due 2.93 2 GB/320 GB HDD 18.5" LCD monitor
18	HCL-Intel core 2 due 2.93 2 GB/320 GB HDD 18.5" LCD monitor
19	HCL-Intel core 2 due 2.93 2 GB/320 GB HDD 18.5" LCD monitor
21	HCL-Intel core 2 due 2.93 2 GB/320 GB HDD 18.5" LCD monitor
22	HCL-Intel core 2 due 2.93 2 GB/320 GB HDD 18.5" LCD monitor
23	HCL-Intel core 2 due 2.93 2 GB/320 GB HDD 18.5" LCD monitor
24	HCL-Intel core 2 due 2.93 2 GB/320 GB HDD 18.5" LCD monitor
25	HCL-Intel core 2 due 2.93 2 GB/320 GB HDD 18.5" LCD monitor
26	HCL-Intel core 2 due 2.93 2 GB/320 GB HDD 18.5" LCD monitor
27	HCL-Intel core 2 due 2.93 2 GB/320 GB HDD 18.5" LCD monitor
28	HCL-Intel core 2 due 2.93 2 GB/320 GB HDD 18.5" LCD monitor
29	HCL-Intel core 2 due 2.93 2 GB/320 GB HDD 18.5" LCD monitor



**Principal**

Balbhim College of Arts, Science  
& Commerce, Beed  
District Beed-431122



30	HCL-Intel core 2 due 2.93 2 GB/320 GB HDD 18.5" LCD monitor
31	HCL-Intel core 2 due 2.93 2 GB/320 GB HDD 18.5" LCD monitor
32	HCL-Intel core 2 due 2.93 2 GB/320 GB HDD 18.5" LCD monitor
33	HCL-Intel core 2 due 2.93 2 GB/320 GB HDD 18.5" LCD monitor
34	HCL-Intel core 2 due 2.93 2 GB/320 GB HDD 18.5" LCD monitor
35	HCL-Intel core 2 due 2.93 2 GB/320 GB HDD 18.5" LCD monitor
36	HCL-Intel core 2 due 2.93 2 GB/320 GB HDD 18.5" LCD monitor
37	HCL-Intel core 2 due 2.93 2 GB/320 GB HDD 18.5" LCD monitor
38	HCL-Intel core 2 due 2.93 2 GB/320 GB HDD 18.5" LCD monitor
39	HCL-Intel core 2 due 2.93 2 GB/320 GB HDD 18.5" LCD monitor
40	HCL-Intel core 2 due 2.93 2 GB/320 GB HDD 18.5" LCD monitor
41	HCL-Intel core 2 due 2.93 2 GB/320 GB HDD 18.5" LCD monitor
42	HCL-Intel core 2 due 2.93 2 GB/320 GB HDD 18.5" LCD monitor
43	HCL-Intel core 2 due 2.93 2 GB/320 GB HDD 18.5" LCD monitor
44	HCL-Intel core 2 due 2.93 2 GB/320 GB HDD 18.5" LCD monitor
45	HCL-Intel core 2 due 2.93 2 GB/320 GB HDD 18.5" LCD monitor
46	HCL-Intel core 2 due 2.93 2 GB/320 GB HDD 18.5" LCD monitor
47	HCL-Intel core 2 due 2.93 2 GB/320 GB HDD 18.5" LCD monitor
48	HCL-Intel core 2 due 2.93 2 GB/320 GB HDD 18.5" LCD monitor
49	HCL-Intel core 2 due 2.93 2 GB/320 GB HDD 18.5" LCD monitor
50	HCL-Intel core 2 due 2.93 2 GB/320 GB HDD 18.5" LCD monitor
51	HCL-Intel core 2 due 2.93 2 GB/320 GB HDD 18.5" LCD monitor
52	HCL-Intel core 2 due 2.93 2 GB/320 GB HDD 18.5" LCD monitor
53	HCL-Intel core 2 due 2.93 2 GB/320 GB HDD 18.5" LCD monitor
54	HCL-Intel core 2 due 2.93 2 GB/320 GB HDD 18.5" LCD monitor
55	HCL-Intel core 2 due 2.93 2 GB/320 GB HDD 18.5" LCD monitor
56	HCL-Intel core 2 due 2.93 2 GB/320 GB HDD 18.5" LCD monitor
57	HCL-Intel core 2 due 2.93 2 GB/320 GB HDD 18.5" LCD monitor
58	HCL-Intel core 2 due 2.93 2 GB/320 GB HDD 18.5" LCD monitor
59	HCL-Intel core 2 due 2.93 2 GB/320 GB HDD 18.5" LCD monitor
60	HCL-Intel core 2 due 2.93 2 GB/320 GB HDD 18.5" LCD monitor
61	HCL-Intel core 2 due 2.93 2 GB/320 GB HDD 18.5" LCD monitor
62	HCL-Intel core 2 due 2.93 2 GB/320 GB HDD 18.5" LCD monitor
63	HCL-Intel core 2 due 2.93 2 GB/320 GB HDD 18.5" LCD monitor
64	HCL-Intel core 2 due 2.93 2 GB/320 GB HDD 18.5" LCD monitor
65	HCL-Intel core 2 due 2.93 2 GB/320 GB HDD 18.5" LCD monitor
66	HCL-Intel core 2 due 2.93 2 GB/320 GB HDD 18.5" LCD monitor
67	HCL-Intel core 2 due 2.93 2 GB/320 GB HDD 18.5" LCD monitor
68	HCL-Intel core 2 due 2.93 2 GB/320 GB HDD 18.5" LCD monitor
69	HCL-Intel core 2 due 2.93 2 GB/320 GB HDD 18.5" LCD monitor
70	HCL-Intel core 2 due 2.93 2 GB/320 GB HDD 18.5" LCD monitor
71	HCL-Intel core 2 due 2.93 2 GB/320 GB HDD 18.5" LCD monitor
72	HCL-Intel core 2 due 2.93 2 GB/320 GB HDD 18.5" LCD monitor
73	HCL-Intel core 2 due 2.93 2 GB/320 GB HDD 18.5" LCD monitor
74	HCL-Intel core 2 due 2.93 2 GB/320 GB HDD 18.5" LCD monitor
75	HCL-Intel core 2 due 2.93 2 GB/320 GB HDD 18.5" LCD monitor



*[Handwritten signature]*

Principal  
Balbhim College of Arts, Science  
& Commerce, Beed  
District Beed-431122



76	HCL-Intel core 2 due 2.93 2 GB/320 GB HDD 18.5" LCD monitor
77	HCL-Intel core 2 due 2.93 2 GB/320 GB HDD 18.5" LCD monitor
78	HCL-Intel core 2 due 2.93 2 GB/320 GB HDD 18.5" LCD monitor
79	HCL-Intel core 2 due 2.93 2 GB/320 GB HDD 18.5" LCD monitor
80	HCL-Intel core 2 due 2.93 2 GB/320 GB HDD 18.5" LCD monitor
81	HCL-Intel core 2 due 2.93 2 GB/320 GB HDD 18.5" LCD monitor
82	HCL-Intel core 2 due 2.93 2 GB/320 GB HDD 18.5" LCD monitor
83	HCL-Intel core 2 due 2.93 2 GB/320 GB HDD 18.5" LCD monitor
84	HCL-Intel core 2 due 2.93 2 GB/320 GB HDD 18.5" LCD monitor
85	HCL-Intel core 2 due 2.93 2 GB/320 GB HDD 18.5" LCD monitor
86	HCL-Intel core 2 due 2.93 2 GB/320 GB HDD 18.5" LCD monitor
87	HCL-Intel core 2 due 2.93 2 GB/320 GB HDD 18.5" LCD monitor
88	HCL-Intel core 2 due 2.93 2 GB/320 GB HDD 18.5" LCD monitor
89	HCL-Intel core 2 due 2.93 2 GB/320 GB HDD 18.5" LCD monitor
90	HCL-Intel core 2 due 2.93 2 GB/320 GB HDD 18.5" LCD monitor
91	HCL-Intel core 2 due 2.93 2 GB/320 GB HDD 18.5" LCD monitor
92	HCL-Intel core 2 due 2.93 2 GB/320 GB HDD 18.5" LCD monitor
93	HCL-Intel core 2 due 2.93 2 GB/320 GB HDD 18.5" LCD monitor
94	HCL-Intel core 2 due 2.93 2 GB/320 GB HDD 18.5" LCD monitor
95	HCL-Intel core 2 due 2.93 2 GB/320 GB HDD 18.5" LCD monitor
96	HCL-Intel core 2 due 2.93 2 GB/320 GB HDD 18.5" LCD monitor
97	HCL-Intel core 2 due 2.93 2 GB/320 GB HDD 18.5" LCD monitor
98	HCL-Intel core 2 due 2.93 2 GB/320 GB HDD 18.5" LCD monitor
99	HCL-Intel core 2 due 2.93 2 GB/320 GB HDD 18.5" LCD monitor
100	HCL-Intel core 2 due 2.93 2 GB/320 GB HDD 18.5" LCD monitor
101	HCL-Intel core 2 due 2.93 2 GB/320 GB HDD 18.5" LCD monitor
102	HCL –Intel core 2 due 2.9 2 GB/ 500 GB HDD 18.5" LCD Monitor
103	HCL –Intel core 2 due 2.9 2 GB/ 500 GB HDD 18.5" LCD Monitor
104	HCL –Intel core 2 due 2.9 2 GB/ 500 GB HDD 18.5" LCD Monitor
105	HCL –Intel core 2 due 2.9 2 GB/ 500 GB HDD 18.5" LCD Monitor
106	HCL –Intel core 2 due 2.9 2 GB/ 500 GB HDD 18.5" LCD Monitor
107	HCL –Intel core 2 due 2.9 2 GB/ 500 GB HDD 18.5" LCD Monitor
108	HCL –Intel core 2 due 2.9 2 GB/ 500 GB HDD 18.5" LCD Monitor
109	HCL –Intel core 2 due 2.9 2 GB/ 500 GB HDD 18.5" LCD Monitor
110	HCL –Intel core 2 due 2.9 2 GB/ 500 GB HDD 18.5" LCD Monitor
111	HCL –Intel core 2 due 2.9 2 GB/ 500 GB HDD 18.5" LCD Monitor
112	HCL –Intel core 2 due 2.9 2 GB/ 500 GB HDD 18.5" LCD Monitor
113	HCL –Intel core 2 due 2.9 2 GB/ 500 GB HDD 18.5" LCD Monitor
114	HCL –Intel core 2 due 2.9 2 GB/ 500 GB HDD 18.5" LCD Monitor
115	HCL –Intel core 2 due 2.9 2 GB/ 500 GB HDD 18.5" LCD Monitor
116	HCL –Intel core 2 due 2.9 2 GB/ 500 GB HDD 18.5" LCD Monitor
117	HCL –Intel core 2 due 2.9 2 GB/ 500 GB HDD 18.5" LCD Monitor
118	HCL –Intel core 2 due 2.9 2 GB/ 500 GB HDD 18.5" LCD Monitor
119	HCL –Intel core 2 due 2.9 2 GB/ 500 GB HDD 18.5" LCD Monitor
120	HCL –Intel core 2 due 2.9 2 GB/ 500 GB HDD 18.5" LCD Monitor
121	HCL –Intel core 2 due 2.9 2 GB/ 500 GB HDD 18.5" LCD Monitor



**Principal**

**Salbhim College of Arts, Science  
& Commerce, Beed  
District Beed-431122**



122	HCL –Intel core 2 due 2.9 2 GB/ 500 GB HDD 18.5" LCD Monitor
123	HCL –Intel core 2 due 2.9 2 GB/ 500 GB HDD 18.5" LCD Monitor
124	HCL –Intel core 2 due 2.9 2 GB/ 500 GB HDD 18.5" LCD Monitor
125	HCL –Intel core 2 due 2.9 2 GB/ 500 GB HDD 18.5" LCD Monitor
126	HCL –Intel core 2 due 2.9 2 GB/ 500 GB HDD 18.5" LCD Monitor
127	HCL –Intel core 2 due 2.9 2 GB/ 500 GB HDD 18.5" LCD Monitor
128	HCL –Intel core 2 due 2.9 2 GB/ 500 GB HDD 18.5" LCD Monitor
129	HCL –Intel core 2 due 2.9 2 GB/ 500 GB HDD 18.5" LCD Monitor
130	HCL –Intel core 2 due 2.9 2 GB/ 500 GB HDD 18.5" LCD Monitor
131	HCL –Intel core 2 due 2.9 2 GB/ 500 GB HDD 18.5" LCD Monitor
132	HCL –Intel core 2 due 2.9 2 GB/ 500 GB HDD 18.5" LCD Monitor
133	HCL –Intel core 2 due 2.9 2 GB/ 500 GB HDD 18.5" LCD Monitor
134	HCL –Intel core 2 due 2.9 2 GB/ 500 GB HDD 18.5" LCD Monitor
135	HCL –Intel core 2 due 2.9 2 GB/ 500 GB HDD 18.5" LCD Monitor
136	HCL –Intel core 2 due 2.9 2 GB/ 500 GB HDD 18.5" LCD Monitor
137	HCL –Intel core 2 due 2.9 2 GB/ 500 GB HDD 18.5" LCD Monitor
138	HCL –Intel core 2 due 2.9 2 GB/ 500 GB HDD 18.5" LCD Monitor
139	HCL –Intel core 2 due 2.9 2 GB/ 500 GB HDD 18.5" LCD Monitor
140	HCL –Intel core 2 due 2.9 2 GB/ 500 GB HDD 18.5" LCD Monitor
141	HCL –Intel core 2 due 2.9 2 GB/ 500 GB HDD 18.5" LCD Monitor
142	HCL –Intel core 2 due 2.9 2 GB/ 500 GB HDD 18.5" LCD Monitor
143	HCL –Intel core 2 due 2.9 2 GB/ 500 GB HDD 18.5" LCD Monitor
144	HCL –Intel core 2 due 2.9 2 GB/ 500 GB HDD 18.5" LCD Monitor
145	HCL –Intel core 2 due 2.9 2 GB/ 500 GB HDD 18.5" LCD Monitor
146	HCL –Intel core 2 due 2.9 2 GB/ 500 GB HDD 18.5" LCD Monitor
147	HCL –Intel core 2 due 2.9 2 GB/ 500 GB HDD 18.5" LCD Monitor
148	HCL –Intel core 2 due 2.9 2 GB/ 500 GB HDD 18.5" LCD Monitor
149	HCL –Intel core 2 due 2.9 2 GB/ 500 GB HDD 18.5" LCD Monitor
150	HCL –Intel core 2 due 2.9 2 GB/ 500 GB HDD 18.5" LCD Monitor
151	HCL –Intel core 2 due 2.9 2 GB/ 500 GB HDD 18.5" LCD Monitor
152	HCL –Intel core 2 due 2.9 2 GB/ 500 GB HDD 18.5" LCD Monitor
153	HCL –Intel core 2 due 2.9 2 GB/ 500 GB HDD 18.5" LCD Monitor
154	HCL –Intel core 2 due 2.9 2 GB/ 500 GB HDD 18.5" LCD Monitor
155	HCL –Intel core 2 due 2.9 2 GB/ 500 GB HDD 18.5" LCD Monitor
156	HCL –Intel core 2 due 2.9 2 GB/ 500 GB HDD 18.5" LCD Monitor
157	HCL –Intel core 2 due 2.9 2 GB/ 500 GB HDD 18.5" LCD Monitor
158	HCL –Intel core 2 due 2.9 2 GB/ 500 GB HDD 18.5" LCD Monitor
159	HCL –Intel core 2 due 2.9 2 GB/ 500 GB HDD 18.5" LCD Monitor
160	HCL –Intel core 2 due 2.9 2 GB/ 500 GB HDD 18.5" LCD Monitor
161	HCL –Intel core 2 due 2.9 2 GB/ 500 GB HDD 18.5" LCD Monitor
162	Intel Pentium 512 MB /320 GB CRT Monitor
163	Intel Pentium 512 MB /320 GB CRT Monitor
164	Intel Pentium 512 MB /320 GB CRT Monitor
165	Intel Pentium 512 MB /320 GB CRT Monitor
166	Intel Pentium 512 MB /320 GB CRT Monitor
167	Intel Pentium 512 MB /320 GB CRT Monitor



*[Signature]*  
Principal

Balbhim College of Arts, Science  
& Commerce, Beed  
District Beed-431122




168	Intel Pentium 512 MB /320 GB CRT Monitor
169	Intel Pentium 512 MB /320 GB CRT Monitor
170	Intel Pentium 512 MB /320 GB CRT Monitor
171	Intel Pentium 512 MB /320 GB CRT Monitor
172	Intel Pentium 512 MB /320 GB CRT Monitor
173	Intel Pentium 512 MB /320 GB CRT Monitor
174	Intel Pentium 512 MB /320 GB CRT Monitor
175	Intel Pentium 512 MB /320 GB CRT Monitor
176	Intel Pentium 512 MB /320 GB CRT Monitor
177	Intel Pentium 512 MB /320 GB CRT Monitor
178	Intel Pentium 512 MB /320 GB CRT Monitor
179	Intel Pentium 512 MB /320 GB CRT Monitor
180	Intel Pentium 512 MB /320 GB CRT Monitor
181	Intel Pentium 512 MB /320 GB CRT Monitor
182	Intel Pentium 512 MB /320 GB CRT Monitor
183	Intel Pentium 512 MB /320 GB CRT Monitor
184	Intel Pentium 512 MB /320 GB CRT Monitor
185	Intel Pentium 512 MB /320 GB CRT Monitor
186	Intel Pentium 512 MB /320 GB CRT Monitor
187	Intel Pentium 512 MB /320 GB CRT Monitor
188	Intel Pentium 512 MB /320 GB CRT Monitor
189	Intel Pentium 512 MB /320 GB CRT Monitor
190	Intel Pentium 512 MB /320 GB CRT Monitor
191	Intel Pentium 512 MB /320 GB CRT Monitor
192	Intel Pentium 512 MB /320 GB CRT Monitor
193	Intel Pentium 512 MB /320 GB CRT Monitor
194	Intel Pentium 512 MB /320 GB CRT Monitor
195	Intel Pentium 512 MB /320 GB CRT Monitor
196	Intel Pentium 512 MB /320 GB CRT Monitor
197	Intel Pentium 512 MB /320 GB CRT Monitor
198	Intel Pentium 512 MB /320 GB CRT Monitor
199	Intel Pentium 512 MB /320 GB CRT Monitor
200	Intel Pentium 512 MB /320 GB CRT Monitor
201	Intel Pentium 512 MB /320 GB CRT Monitor
202	Intel Pentium 512 MB /320 GB CRT Monitor

**COMPUTER PURCHASED IN YEAR 2017-2022**

203	Dell 5573and B 4 GB, 17B, 19.5 Monitor , Keyboard and Mouse
204	Dell 5573and B 4 GB, 17B, 19.5 Monitor , Keyboard and Mouse
205	Dell 5573and B 4 GB, 17B, 19.5 Monitor , Keyboard and Mouse
206	Dell 5573and B 4 GB, 17B, 19.5 Monitor , Keyboard and Mouse
207	Dell 5573and B 4 GB, 17B, 19.5 Monitor , Keyboard and Mouse
208	Dell 5573and B 4 GB, 17B, 19.5 Monitor , Keyboard and Mouse




  
**Principal**  
 Balbhim College of Arts, Science  
 & Commerce, Beed  
 District Beed-431122



209	Dell 5573and B 4 GB, 17B, 19.5 Monitor , Keyboard and Mouse
210	Dell 3573 13.8 <sup>th</sup> gen, 4 GB ITB, 19.5 Monitor, Keyboard and Mouse
210	Dell 3573 13.8 <sup>th</sup> gen, 4 GB ITB, 19.5 Monitor, Keyboard and Mouse
211	Dell 3573 13.8 <sup>th</sup> gen, 4 GB ITB, 19.5 Monitor, Keyboard and Mouse
212	Dell 3573 13.8 <sup>th</sup> gen, 4 GB ITB, 19.5 Monitor, Keyboard and Mouse
213	Dell 3573 13.8 <sup>th</sup> gen, 4 GB ITB, 19.5 Monitor, Keyboard and Mouse
214	Dell 3573 13.8 <sup>th</sup> gen, 4 GB ITB, 19.5 Monitor, Keyboard and Mouse
215	Dell 3573 13.8 <sup>th</sup> gen, 4 GB ITB, 19.5 Monitor, Keyboard and Mouse
216	Lenovo Desktop V 530,
217	Lenovo Desktop V 530,
218	Lenovo Desktop V 530,
219	Lenovo Desktop V 530,
220	Lenovo Desktop V 530,
221	Lenovo Desktop V 530,
222	Lenovo Desktop V 530,
223	Lenovo Desktop V 530,
224	Lenovo 19.5" LCDMonitor
225	Lenovo 19.5" Leo Monitor
226	Lenovo 19.5" LCDMonitor
227	Lenovo 19.5" LCDMonitor
228	Lenovo 19.5" LCDMonitor
229	Lenovo 19.5" LCDMonitor
230	Lenovo 19.5" LCDMonitor
231	Lenovo 19.5" LCDMonitor
232	Lenovo V Desktop 530
233	Lenovo V Desktop 530
234	Lenovo 19.5" LCDMonitor
235	Lenovo 19.5" LCDMonitor



  
**Principal**  
**Balbhim College of Arts, Science**  
**& Commerce, Beed**  
**District Beed-431122**

Registration No. : F - 47 A'bad  
Estd. Year : June 1960  
Off. : 02442 - 222470, 231094  
Fax. : 02442 - 224739

**Dr. V. G. Sanap**

**Principal**

M.A., M.Phil., Ph.D



Marathwada Shikshan Prasarak Mandal's,

**Balbhim Arts, Science & Commerce College, Beed**

Dist. Beed (M.S.) 431 122

NAAC Reaccredited (III cycle) A+ Grade  
College with Potential for Excellence  
I.S.O. Certified

(Permanently affiliated to Dr. Babasaheb Ambedkar Marathwada University, Aurangabad)

web - [www.msprmbbeed.com](http://www.msprmbbeed.com)

e-mail - [msprmbbeed@gmail.com](mailto:msprmbbeed@gmail.com)

e-mail - [drvasantsanap11@gmail.com](mailto:drvasantsanap11@gmail.com)

### Laptop

Sr. No.	Laptop	No
1.	HP Laptop Core i3 4GB RAM 1 TB HDD DVD MW 15" Screen	1
2.	DEL INSP GB 3500 G% 10 <sup>th</sup> Gen Intel core, 8 GB RAM/1TB+256 GB/SSD /4GB 1.6" FHD/N in 10 Home +MS Office , No Bag, Laptop	2
3.	DEL-3521, Dual Core- 21/7/2GB/RAM/500GB/HDD/DVD writer 15.6" Screen? DOS CC/ with / All Accessories 5/N	3
4.	Pace System DEL Laptop , Intel Core i5/2 MB cache/4 GB/DDR-3 RAM/320GB /15.6" Screen/Integrated 10/100 Ethernet card/wifi Bluetooth / SD cards lot /Integrated Audio/ Web camera 1.3 MP/ Warranty 1 yrs	1
5.	DEL laptop Inter card /24GB/2 MB cache/340 GB RAM HDD/DVD/ 15.6" Screen / Integrated Audio/13 Mp Camera	1
6.	Laptop Conpag620 S/N sensor0821/kal 4%	6
7.	DEL/.Laptop Intel Core i3 12.0 GHB/3GB/ DDQ-3 /RAM 320/ GB / HOD/DVD/R/W 15.6" Screen/ Ethernet Card? Wi-Fi/BT 1 No I/ DOS/ Carry Case	2
8.	DELL. Laptop CORE i3 / 2.0 GHB/DDR-3 RAM /820 GB HOD /DVD /W/15.6" Screen / Card/?BT/WEB/Camera/ DOS. Carry Case	8
		24



**Principal**

**Balbhim College of Arts, Science  
& Commerce, Beed  
District Beed-431122**



Registration No. : F - 47 A'bad  
Estd. Year : June 1960  
Off. : 02442 - 222470, 231094  
Fax. : 02442 - 224739

Marathwada Shikshan Prasarak Mandal's,

## Balbhim Arts, Science & Commerce College, Beed

Dist. Beed (M.S.) 431 122

**Dr. V. G. Sanap**

**Principal**

M.A., M.Phil., Ph.D



NAAC Reaccredited (III cycle) A+ Grade  
College with Potential for Excellence  
I.S.O. Certified

(Permanently affiliated to Dr. Babasaheb Ambedkar Marathwada University, Aurangabad)

web - [www.mspmbbeed.com](http://www.mspmbbeed.com)

e- mail - [mspmbbeed@gmail.com](mailto:mspmbbeed@gmail.com)

e- mail - [drvasantsanap11@gmail.com](mailto:drvasantsanap11@gmail.com)

### LCD Projector Purchased during 2017-2022

Sr.No	LCD Projector Specification
1	SONY VPL EX430, projector, 320 D Lumens X GA resolution
2	SONY VPL EX430, projector, 320 D Lumens X GA resolution
3	SONY VPL EX430, projector, 320 D Lumens X GA resolution
4	EPSON EP-541 Projector
5	EPSON EP-541 Projector



  
Principal

Balbhim College of Arts, Science  
& Commerce, Beed  
District Beed-431122

Registration No. : F - 47 A'bad  
Estd. Year : June 1960  
Off. : 02442 - 222470, 231094  
Fax. : 02442 - 224739

Marathwada Shikshan Prasarak Mandal's,

## Balbhim Arts, Science & Commerce College, Beed

Dist. Beed (M.S.) 431 122

**Dr. V. G. Sanap**

**Principal**

M.A., M.Phil., Ph.D



NAAC Reaccredited (III cycle) A+ Grade  
College with Potential for Excellence  
I.S.O. Certified

(Permanently affiliated to Dr. Babasaheb Ambedkar Marathwada University, Aurangabad)

web - [www.mspmbeced.com](http://www.mspmbeced.com)

e-mail - [mspmbeed@gmail.com](mailto:mspmbeed@gmail.com)

e-mail - [drvasantsanap11@gmail.com](mailto:drvasantsanap11@gmail.com)

### CCTV Camera

Sr.No	CCTV Cameras
1.	Zenex KT 16ch-H 264 DVR
2.	Zenex ZD 20421R1/3 Sony CCD Digital Image -Sensor
3.	Zenex ZD 20421R1/3 Sony CCD Digital Image -Sensor
4.	Zenex ZD 20421R1/3 Sony CCD Digital Image -Sensor
5.	Zenex ZD 20421R1/3 Sony CCD Digital Image -Sensor
6.	Zenex ZD 20421R1/3 Sony CCD Digital Image -Sensor
7.	Zenex ZD 20421R1/3 Sony CCD Digital Image -Sensor
8.	Zenex ZD 20421R1/3 Sony CCD Digital Image -Sensor
9.	Zenex ZD 20421R1/3 Sony CCD Digital Image -Sensor
10.	Zenex ZD 20421R1/3 Sony CCD Digital Image -Sensor
11.	Zenex ZCM551 1/3 Sony CCD, HAD, CCD/AWB, ACL, BLC Iris Control Optical 10W pass Filter 550TVL
12.	Zenex ZCM551 1/3 Sony CCD, HAD, CCD/AWB, ACL, BLC Iris Control Optical 10W pass Filter 550TVL
13.	Zenex 2CM 420 1/3 Sony 420 TVL AGC AWBBLC ON /off switchable with 4mm lens and stand
14.	Zenex 2CM 420 1/3 Sony 420 TVL AGC AWBBLC ON /off switchable with 4mm lens and stand
15.	Zenex 2CM 420 1/3 Sony 420 TVL AGC AWBBLC ON /off switchable with 4mm lens and stand
16.	Zenex 2CM 420 1/3 Sony 420 TVL AGC AWBBLC ON /off switchable with 4mm lens and stand
17.	Indo Plast 3+1 cable copper cable 90 mtr
18.	Indo Plast 3+1 cable copper cable 90 mtr
19.	Indo Plast 3+1 cable copper cable 90 mtr
20.	Indo Plast 3+1 cable copper cable 90 mtr
21.	BNC Connector



**Principal**

**Balbhim College of Arts, Science  
& Commerce, Beed  
District Beed-431122**



22.	BNC Connector
23.	BNC Connector
24.	BNC Connector
25.	BNC Connector
26.	BNC Connector
27.	BNC Connector
28.	BNC Connector
29.	BNC Connector
30.	BNC Connector
31.	BNC Connector
32.	BNC Connector
33.	BNC Connector
34.	BNC Connector
35.	BNC Connector
36.	BNC Connector
37.	BNC Connector
38.	BNC Connector
39.	BNC Connector
40.	BNC Connector
41.	BNC Connector
42.	BNC Connector
43.	BNC Connector
44.	BNC Connector
45.	BNC Connector
46.	BNC Connector
47.	BNC Connector
48.	BNC Connector
49.	BNC Connector
50.	BNC Connector
51.	BNC Connector
52.	BNC Connector
53.	15AM power Adaptor
54.	Seagate 1 TB SATA Hard -Disk



  
**Principal**  
**Balbhim College of Arts, Science**  
**& Commerce, Beed**  
**District Beed-431122**

Registration No. : F - 47 A'bad  
Estd. Year : June 1960  
Off. : 02442 - 222470, 231094  
Fax. : 02442 - 224739

Marathwada Shikshan Prasarak Mandal's,

## Balbhim Arts, Science & Commerce College, Beed

Dist. Beed (M.S.) 431 122

**Dr. V. G. Sanap**

**Principal**

M.A., M.Phil., Ph.D



NAAC Reaccredited (III cycle) A+ Grade  
College with Potential for Excellence  
I.S.O. Certified

(Permanently affiliated to Dr. Babasaheb Ambedkar Marathwada University, Aurangabad)

web - [www.mspmbbeed.com](http://www.mspmbbeed.com)

e- mail - [mspmbeed@gmail.com](mailto:mspmbeed@gmail.com)

e- mail - [drvasantsanap11@gmail.com](mailto:drvasantsanap11@gmail.com)

### Printer and Scanner

Sr.No.	Printer
1.	HP deskjet all in one 3545
2.	EPSON colour Printer 13216*AGS015106
3.	Epson Inkjet Printer 4800RDSK 068416
4.	MAKE CANNON MODEL NO. 2900 B
5.	MAKE CANNON MODEL NO. 2900 B
6.	MAKE CANNON MODEL NO. 2900 B
7.	MAKE CANNON MODEL NO. 2900 B
8.	MAKE CANNON MODEL NO. 2900 B
9.	MAKE CANNON MODEL NO. 2900 B
10.	MAKE CANNON MODEL NO. 2900 B
11.	MAKE CANNON MODEL NO. 2900 B
12.	MAKE CANNON MODEL NO.3010
13.	MAKE CANNON MODEL NO.3010
14.	MAKE CANNON MODEL NO.3010
15.	MAKE CANNON MODEL NO.3010
16.	MAKE CANNON MODEL NO.3010
17.	Make HP Scanner Model No. 200
18.	Make HP Scanner Model No. 200
19.	Make HP Scanner Model No. 200
20.	Make HP Scanner Model No. 200
21.	Make HP Scanner Model No. 200
22.	HP Scanner 3000s2



  
Principal

Balbhim College of Arts, Science  
& Commerce, Beed  
District Beed-431122



# **LIST OF TOTAL DEVICES AND CONFIGURATIONS**

Registration No. : F - 47 A'bad  
Estd. Year : June 1960  
Off. : 02442 - 222470, 231094  
Fax. : 02442 - 224739

Marathwada Shikshan Prasarak Mandal's,

**Balbhim Arts, Science & Commerce College, Beed**

Dist. Beed (M.S.) 431 122

**Dr.V.G.Sanap**

**Principal**

M.A., M.Phil., Ph.D



NAAC Reaccredited (III cycle) A+ Grade  
College with Potential for Excellence  
I.S.O. Certified

(Permanently affiliated to Dr. Babasaheb Ambedkar Marathwada University, Aurangabad)

web - [www.msmbbeed.com](http://www.msmbbeed.com)

e- mail - [msmbbeed@gmail.com](mailto:msmbbeed@gmail.com)

e- mail - [drvasantsanap11@gmail.com](mailto:drvasantsanap11@gmail.com)

### LIST OF TOTAL DEVICES AND CONFIGURATIONS

Sr.No.	Device Name	Configuration/ Company Name	Total
1	Computers	HCL/DEL/LENOVO	235
2	LCD Projectors	SONY/EPSON/SHARP/KYAN	15
3	Printer	HP/CANON/EPSON/BROTHER	39
4	Internet Modem (BSNL Broadband /SIM)	BSNL-FFT	02
5	WIFI data card	DILINK	01
6	Battery Backup	EXIDE	22
7	CCTV	ZENEX/HIKE VISION MICROTECH CHAMPION	16
8	Laptop	HP/DEL	24



  
**Principal**

**Balbhim College of Arts, Science  
& Commerce, Beed  
District Beed-431122**

**INDEX**



**COMPARATIVE CHART  
SHOWING UPDATES OF  
ICT FACILITIES IN THE  
LAST FIVE YEARS.**

Registration No. : F - 47 A'bad  
Estd. Year : June 1960  
Off. : 02442 - 222470, 231094  
Fax. : 02442 - 224739

Marathwada Shikshan Prasarak Mandal's,

**Balbhim Arts, Science & Commerce College, Beed**

Dist. Beed (M.S.) 431 122

**Dr. V. G. Sanap**

**Principal**

M.A., M.Phil., Ph.D



NAAC Reaccredited (III cycle) A+ Grade  
College with Potential for Excellence  
I.S.O. Certified

(Permanently affiliated to Dr. Babasaheb Ambedkar Marathwada University, Aurangabad)

web - [www.msprmbbeed.com](http://www.msprmbbeed.com)

e- mail - [msprmbbeed@gmail.com](mailto:msprmbbeed@gmail.com)

e- mail - [drvasantsanap11@gmail.com](mailto:drvasantsanap11@gmail.com)

### COMPARATIVE CHART SHOWING UPDATES OF ICT FACILITIES IN THE FIVE YEARS.

Sr.No.	Facility	In 2017	2022
1	Total Computers	199	235
2	Campus network	150	170
3	Internet facility	10mbps	10mbps
4	Computer Laboratories	07	07
5	ICT enabled Classroom	07	09
6	Printers/Scanner	19/10	39/13
7	e-Journals	6000	6000+
8	e-books	3000000	3135000+
9	Language Laboratory	1	1
10	Number of Books in Central Library	94672	99277
11	Number of LCD Projectors	10	15
12	Multi Scanner	1	2
13	Barcode Scanner	02	02
14	Barcode Printer	01	01
15	Smart Board	03	03
16	Laptops	21	24



  
**Principal**

**Balbhim College of Arts, Science  
& Commerce, Beed  
District Beed-431122**

**INDEX**



**LIST OF SOFTWARE USED  
IN COMPUTER AND BY  
COLLEGE FACULTY.**

Registration No. : F - 47 A'bad  
Estd. Year : June 1960  
Off. : 02442 - 222470, 231094  
Fax. : 02442 - 224739

Marathwada Shikshan Prasarak Mandal's,

## Balbhim Arts, Science & Commerce College, Beed

Dist. Beed (M.S.) 431 122

**Dr. V. G. Sanap**

**Principal**

M.A., M.Phil., Ph.D



NAAC Reaccredited (III cycle) A\* Grade  
College with Potential for Excellence  
I.S.O. Certified

(Permanently affiliated to Dr. Babasaheb Ambedkar Marathwada University, Aurangabad)

web - [www.mspsmbeed.com](http://www.mspsmbeed.com)


e- mail - [mspsmbeed@gmail.com](mailto:mspsmbeed@gmail.com)

e- mail - [drvasantsanap11@gmail.com](mailto:drvasantsanap11@gmail.com)

### SOFTWARE'S USED IN COMPUTERS AND BY COLLEGE FACULTY

Sr.No	Name of Software	Used By	Quantity
1	Visual Studio	Computer	1
2	MS-Office	Computer	1
3	Turbo C++	Computer	1
4	Antivirus	Computer	65
5	LIBMAN	Library	1
6	Tally 9.0	Account Section	1
7	ETH	Academic Section	1
8	Shrilipi	Jr College Office and Marathi Typing Section	02 01
9	MATLAB	Mathematics	01
10	Orell	Language Lab	01
11	Chemdraw	Chemistry	01
12	Freeware software PHP, UNIX, Java	Computer	03



  
Principal  
Balbhim College of Arts, Science  
& Commerce, Beed  
District Beed-431122

Maharashtra State Skill Development Society's  
Authorized Training Centre

# Global Computer Education

Opp.Sonajirao Kishirsagar Medical College (B.H.M.S.), Navgan College Road,  
Shivaji Nagar, Beed - 431122 (MH)

Ph.No : (02442) 225156 Mob : 9922355156 E-mail-globalcomp7@gmail.com

Ref.No.

Date: 22/07/2017

## Certificate

This is to certify that we run a scheme to collect e-waste material (like computer, mouse, keypad, wire, cartage, CDs and other computer hardware) from various houses, institutions, firms, market places and colleges to decompose or recycle the e-waste material. Marathwada Shikshan Prasarak Mandal's Balbhim College, Beed is one of the colleges from which we collect the above material from 2016.



*[Handwritten signature]*

*[Handwritten signature]*

Principal

Balbhim College of Arts, Science  
& Commerce, Beed  
District Beed-431122







# Bharat Sanchar Nigam Limited

Account No: 1025463396

Invoice No: WDCMH2126485077

Invoice Date: 05/01/2022

Billing Period

01/12/2021 to 31/12/2021

Tariff Plan: Fibre Premium Plus

PRINCIPAL BALBHIM COLLEGE  
BEEDBALBHIM COLLEGE CAMPUS-BEED  
BEED IN  
BEED-BEED  
431122  
India

TELEPHONE NUMBER

02442-297482

GSTIN

DUE DATE

20-01-2022

AMOUNT PAYABLE

₹ 3897.00

PAY NOW

Scan QR Code to make online  
Portal Payment

## ACCOUNT SUMMARY

Deposit Amount: 1277.00

## PREVIOUS BALANCE

पिछली राशि  
₹ 1506.73

(-)

## PAYMENT RECEIVED

पूर्व भुगतान  
₹ 1507.00

(=)

## ADJUSTMENTS

समायोजन  
₹ 25.54

(=)

## CURRENT CHARGES

वर्तमान शुल्क  
₹ 3871.46

(=)

## TOTAL DUE

कुल बचे  
₹ 3896.73

(=)

## AMOUNT PAYABLE

देय राशि  
₹ 3897.00

Amount in words: Rupees Three Thousand Eight Hundred Ninety Seven Rupees and Zero Paise Only

## SUMMARY CHARGES

Current Charges	वर्तमान शुल्क विवरण	Amount ₹
Recurring Charges	पुनरावर्ती शुल्क	3277.00
One Time Charges	एक बार शुल्क	0.00
Usage Charges	उपयोग प्रभार	0.00
Miscellaneous Charges	विविध प्रभार	0.00
Discount	छूट	0.00
Tax	कर	594.46
Total Current Charges	वर्तमान शुल्क	3871.46

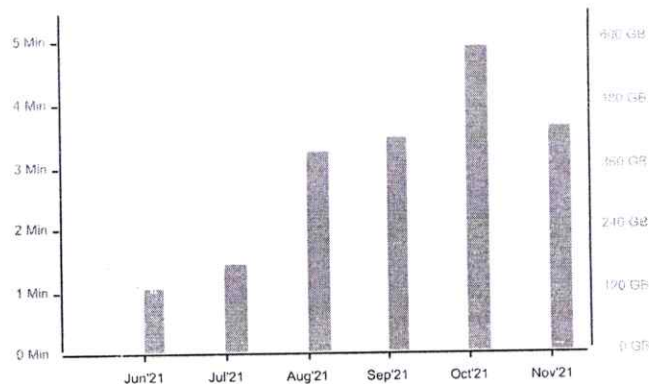
## Tax Details

Tax Type	Percentage	Amount	Taxable Value
CGST	9.00%	297.23	3302.54
SGST/UTGST	9.00%	297.23	3302.54

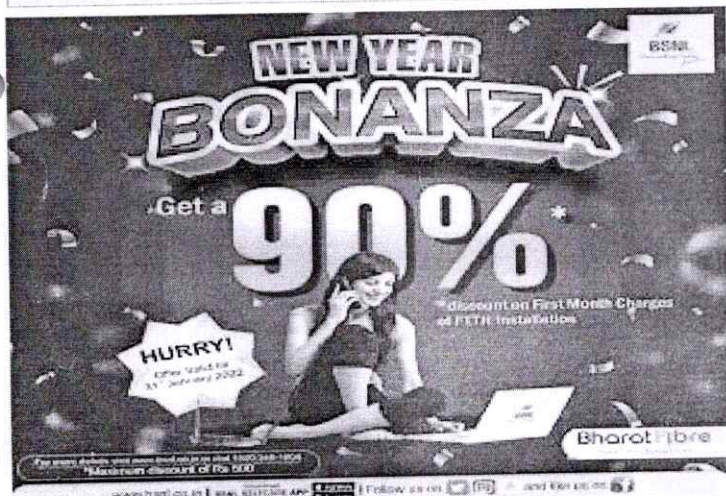
6 Paise Cash Back Offer Amount

0.00

## USAGE HISTORY (6 MONTHS)

Voice(Min)  
Data(GB)

Dear Esteemed Customer, BSNL Wishes you a Very Happy and Prosperous New Year - 2022



S J GURAV

लेखा अधिकारी

For Billing related issues

☎ 02442-223401



Scan QR Code to make UPI Payment

Shirnik PM  
do the needful  
2022

BHARAT SANCHAR NIGAM LTD



Cheque/DD No. \_\_\_\_\_

Dated \_\_\_\_\_

Please Charge Rs. \_\_\_\_\_

Signature \_\_\_\_\_

## - PAYMENT SLIP -

Mode of payment

☒ Cash☐ Cheque/DD☐ Credit Debit Card

Principal

Balbhim College of Arts, Science

&amp; Commerce, Beed

District Beed-431122

Invoice No	WDCMH2126485077
Invoice Date	05/01/2022
Account No	1025463396
Phone No	02442-297482
Due Date	20-01-2022
Amount Payable	₹ 3897.00

Please make crossed Cheque/DD/Pay order for Amount Payable (Rounded Up) in favour of AO (Cash), BSNL, BEED.

For Bank use only





# Bharat Sanchar Nigam Limited

Account No:1025463396 | Invoice No:WDCMH2126485077 | Invoice date:05/01/2022

Super Entertainment with **SUPERSTAR-1** Enjoy **1000 GB** data at speed up to 100 Mbps

up to 5 Mbps beyond

BUNDLED WITH

At just **Rs. 779**

hotstar

## DETAILS OF CURRENT CHARGES

### Payment Details

Description	Date of Payment	Amount(Rs.)
Payments	30/12/21	1507.00

### Adjustment

Adjustment Description	Charges (Rs.)
Penalty For Late Payments Made-SAC-998412	25.54
Total Charges (Rs.)	25.54

Plan : Fibre Premium Plus / Upto 200 Mbps till 3300 GB, 15 Mbps beyond/Unlimited Calls(LCL+STD)

Phone No :pr2442297482\_wid

### Recurring Charges

Product	Plan	Period	Charges(Rs.)
BHARAT_FIBERBB-SAC-998412	Fibre Premium Plus	01/12/21 to 31/12/21	1277.00
BHARAT_FIBER_BB_STAT CIP_CHRGD-SAC-998412	Fibre Premium Plus	25/01/22 to 24/01/23	2000.00
Total Recurring Charges			3277.00

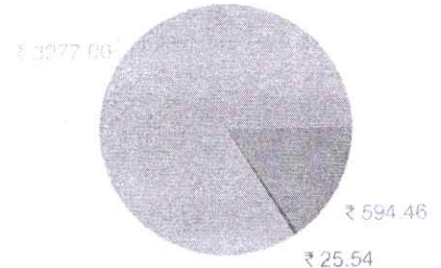
### Usage Charges

Data	Units	Volume	Gross Amt	Disc	Charges(Rs.)
BSNL Broadband	928564686	885.55 GB	0.00	0.00	0.00
Total Usage Charges			0.00	0.00	0.00

Plan : Fibre Premium Plus /

Phone No :02442-297482

## CURRENT CHARGE ANALYSIS



- Recurring charges
- One Time Charges
- Miscellaneous Charges
- Usage Charges
- Adjustments
- Tax

Enjoy entertainment, ask questions and more with Google Nest

Now bundled with **BSNL broadband**

Get Yours Today



Google Nest Mini



Google Nest Hub



Principal

Balbhini College of Arts, Science & Commerce, Beed  
District Beed-431122

**BSNL REWARDS**

**COUPONS OF TOP BRANDS**

Myntra

Flipkart

cleartrip

lifestyle

**& MORE AVAILABLE SAVE WHILE YOU SHOP**

**BSNL Bharat Fibre Superstar Premium Plan**

Bundled Subscription to Live TV & Premium OTT Content

PLAN	Superstar Premium-1	Superstar Premium-2
Speed	Up to 100 Mbps	Up to 150 Mbps
Price	₹ 749/-	₹ 949/-
Includes	24 Hrs Unlimited FREE calling Local +STD on any network within India.	

New Releases every week

Experience **Unlimited** Internet & Calling

Subscribe Now