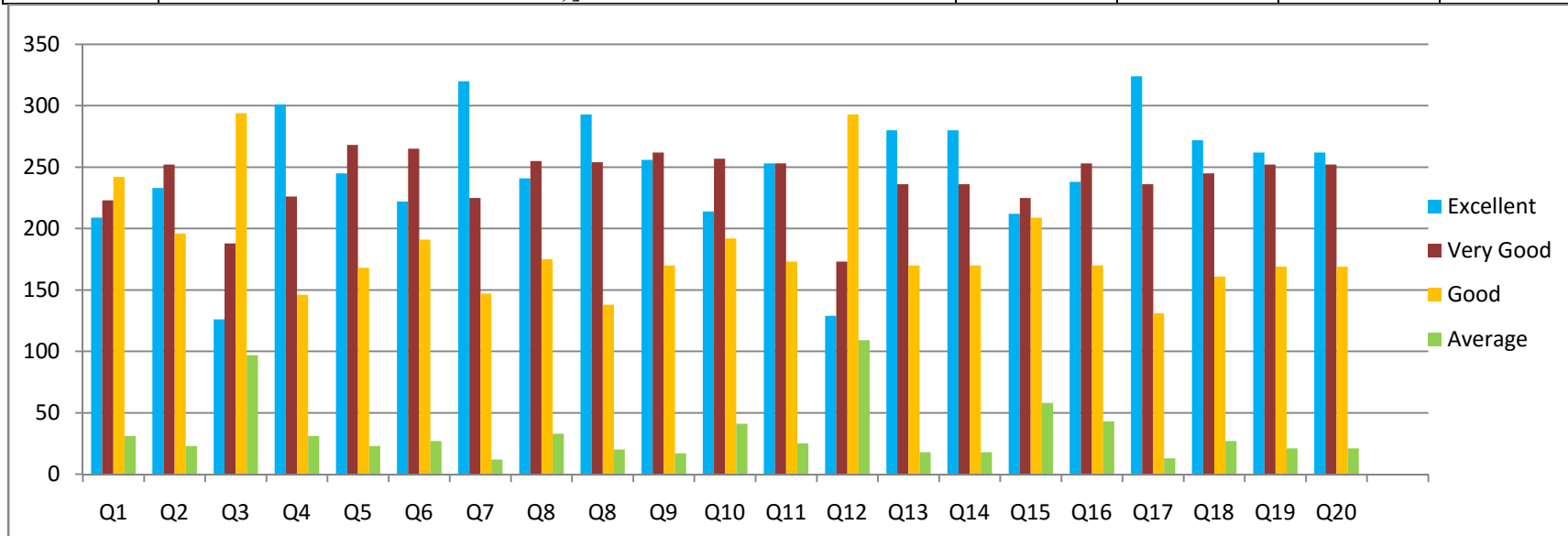


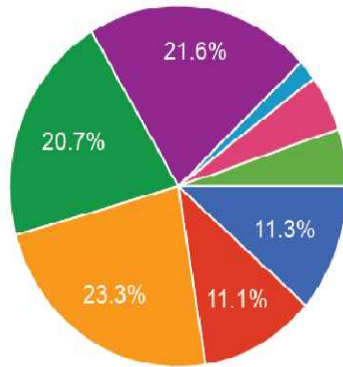
**Marathwada Shikshan Prasarak Mandal's,
Balbhim Arts, Science and Commerce College, Beed-431122
Student Satisfaction Survey (SSS)
Analysis Report
Year: 2020-21**

Sr No	Questions	Excellent (in %)	Very Good (In %)	Good (In %)	Average (In %)
1	Rate your satisfaction level with the following aspects of the Institute (Tick in the relevant cell) [Classrooms or lecture halls (वर्ग खोल्या)]	29.65	31.63	34.33	4.40
2	Rate your satisfaction level with the following aspects of the Institute (Tick in the relevant cell) [Campus facilities (Auditoriums, Science labs, ICT Room, Language Lab etc. (महाविद्यालयातील भौतिक सुविधा, सभागृह, प्रयोग शाळा, इत्यादी)]	33.05	35.74	27.80	3.26
3	Rate your satisfaction level with the following aspects of the Institute (Tick in the relevant cell) [Canteen facilities (उपहारगृह सुविधा)]	17.87	26.67	41.70	13.76
4	Rate your satisfaction level with the following aspects of the Institute (Tick in the relevant cell) [Institute staff helpful with administrative issues you face (महाविद्यालयातील कर्मचारी आपल्या प्रशासकीय, शैक्षणिक अडचणींमध्ये मदत करतात)]	42.70	32.06	20.71	4.40
5	Rate your satisfaction level with the following aspects of the Institute (Tick in the relevant cell) [Career counselor helpful in advising your career decisions (आपल्या भविष्यातील रोजगार, व्यवसाय संधींबाबत निर्णय घेण्यासाठी महाविद्यालयामध्ये व्यवसाय मार्गदर्शन समुपदेशक समुपदेशन करतात)]	34.75	38.01	23.83	3.26
6	Rate your satisfaction level with the following aspects of the Institute (Tick in the relevant cell) [Relevance of your curriculum (आपल्या अभ्यासक्रमासंबंधी समर्पकता / काळानुरूप योग्य)]	31.49	37.59	27.09	3.83
7	Rate your satisfaction level with the following aspects of the Institute (Tick in the relevant cell) [The teachers approach to tea9ching (महाविद्यालयातील शिक्षकांचा अध्यापनासंबंधी दृष्टिकोन)]	45.39	31.91	20.85	1.70

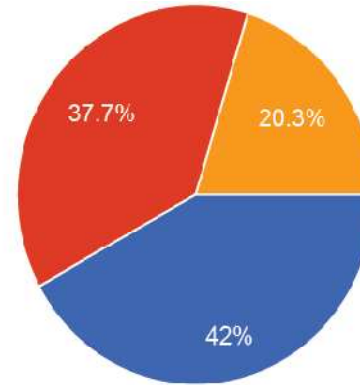
8	Rate your satisfaction level with the following aspects of the Institute (Tick in the relevant cell) [Competitive exam guidance cell Facility (स्पर्धा परीक्षा मार्गदर्शन केंद्रसंबंधी आपले मत नोंदवा)]	34.18	36.17	24.82	4.68
9	Rate your satisfaction level with the following aspects of the Institute (Tick in the relevant cell) [Mentoring process of the institute (महाविद्यालयातील मार्गदर्शक शिक्षकांची मार्गदर्शन पद्धती)]	41.56	36.03	19.57	2.84
10	Rate your satisfaction level with the following aspects of the Institute (Tick in the relevant cell) [The institution makes effort to engage students in the monitoring, review and continuous quality improvement of the teaching learning process (आपले महाविद्यालय विद्यार्थ्यांच्या शैक्षणिक प्रगतीबद्दल, गुणवत्ता सुधाराबद्दल, अध्ययन -अध्यापन प्रक्रिया वैशिष्ट्यपूर्ण /प्रभावी व्हावी यासाठी प्रयत्न करते)]	36.31	37.16	24.11	2.41
11	Rate your satisfaction level with the following aspects of the Institute (Tick in the relevant cell) [Use of ICT tools such as LCD projector, Multimedia, etc. while teaching (अध्यापनामध्ये द्रकश्राव्य माध्यमांचा उपयोग केला जातो)]	30.35	36.45	27.23	5.82
12	Rate your satisfaction level with the following aspects of the Institute (Tick in the relevant cell) [Organization of various activities for students (विद्यार्थ्यांसाठी महाविद्यालयात विविध उपक्रम राबवले जातात)]	35.89	35.89	24.54	3.55
13	Rate your satisfaction level with the following aspects of the Institute (Tick in the relevant cell) [Hostel Facility (वस्तीगृह सुविधा)]	18.30	24.54	41.56	15.46
14	Rate your satisfaction level with the following aspects of the Institute (Tick in the relevant cell) [Quality of the teaching faculty (महाविद्यालयातील शिक्षकांची गुणवत्ता परिणाम कारक अध्यापन)]	39.72	33.48	24.11	2.55
15	Rate your satisfaction level with the following aspects of the Institute (Tick in the relevant cell) [Sports facilities (क्रीडांगण खेळाचे साहित्य जिमखाना इत्यादी सुविधा)]	39.72	33.48	24.11	2.55
16	Rate your satisfaction level with the following aspects of the Institute (Tick in the relevant cell) [Career counseling and placement facilities (व्यवसाय मार्गदर्शन व परिसर मुलाखती रोजगार संधी विषयी सुविधा)]	30.07	31.91	29.65	8.23

17	Rate your satisfaction level with the following aspects of the Institute (Tick in the relevant cell) [Library facility (ग्रंथालय वाचन कक्ष आदि सुविधा)]	33.76	35.89	24.11	6.10
18	Rate your satisfaction level with the following aspects of the Institute (Tick in the relevant cell) [Laboratories are well equipped (अद्ययावत प्रयोगशाला)]	45.96	33.48	18.58	1.84
19	Rate your satisfaction level with the following aspects of the Institute (Tick in the relevant cell) [The overall quality of teaching-learning process in your institute (एकंदर महाविद्यालयात अध्ययन-अध्यापन प्रक्रिया बदलचे आपले मत नोंदवा)]	38.58	34.75	22.84	3.83
20	Rate your satisfaction level with the following aspects of the Institute (Tick in the relevant cell) [Efforts made by the your mentor to inculcate soft skills and life skills and employability skills to make you ready for job opportunities (आपल्याला रोजगारक्षम बनवण्यासाठी आपल्या शिक्षक मार्गदर्शकाद्वारे आपणास संवाद कौशल्ये, जीवनमूल्ये, रोजगारासाठी आवश्यक असणारी कौशल्ये आपल्यामध्ये विकसित केली जातात)]	37.16	35.74	23.97	2.98





- B.A.
- B.Com.
- B.Sc.
- M.A.
- M.Sc.
- B.C.A.
- B.C.S.
- M.Com.



- First Year
- Second Year
- Third Year



[Signature]
Principal
 Balbhim Arts, Sci, Com
 College, Beed